

# 40' 2 Room Production

## Specs

Length – 40'

Width – 8'

## Features

7kw Generator

Two large private office rooms

Inner connecting door between offices

Three large work desks with

Overhead storage cabinets

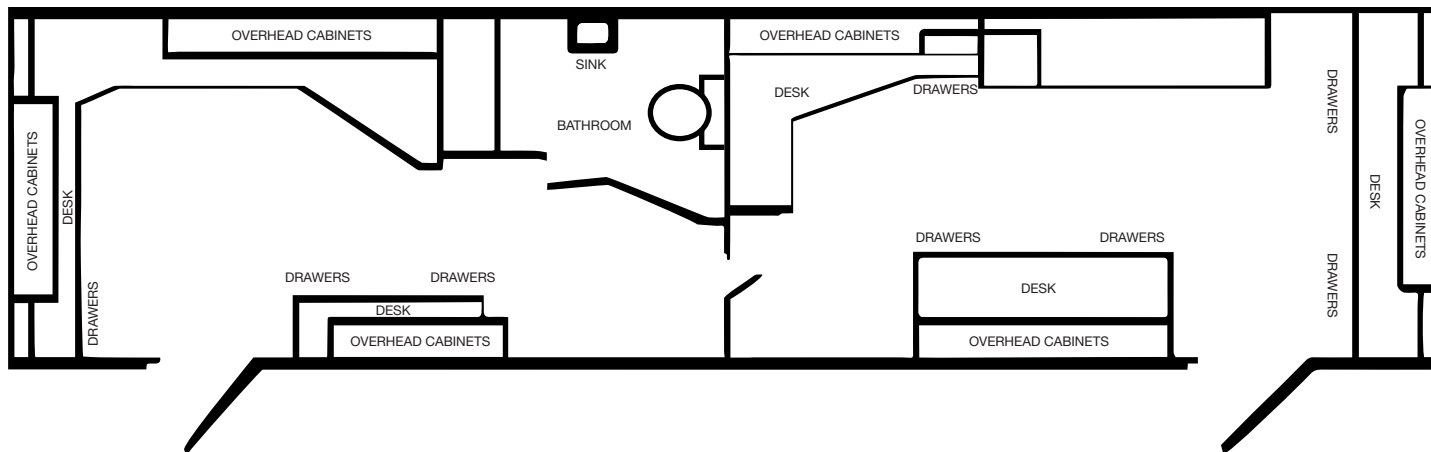
Cork boards

Open shelving

Air conditioning and heating systems

Microwave and refrigerator

AM / FM / Multi-CD stereo system



## Film/TV Contact:

818 252 7722

SetTrailers@Quixote.com

## Commercial/Print Contact:

323 857 5050

VB@Quixote.com

Quixote.com

